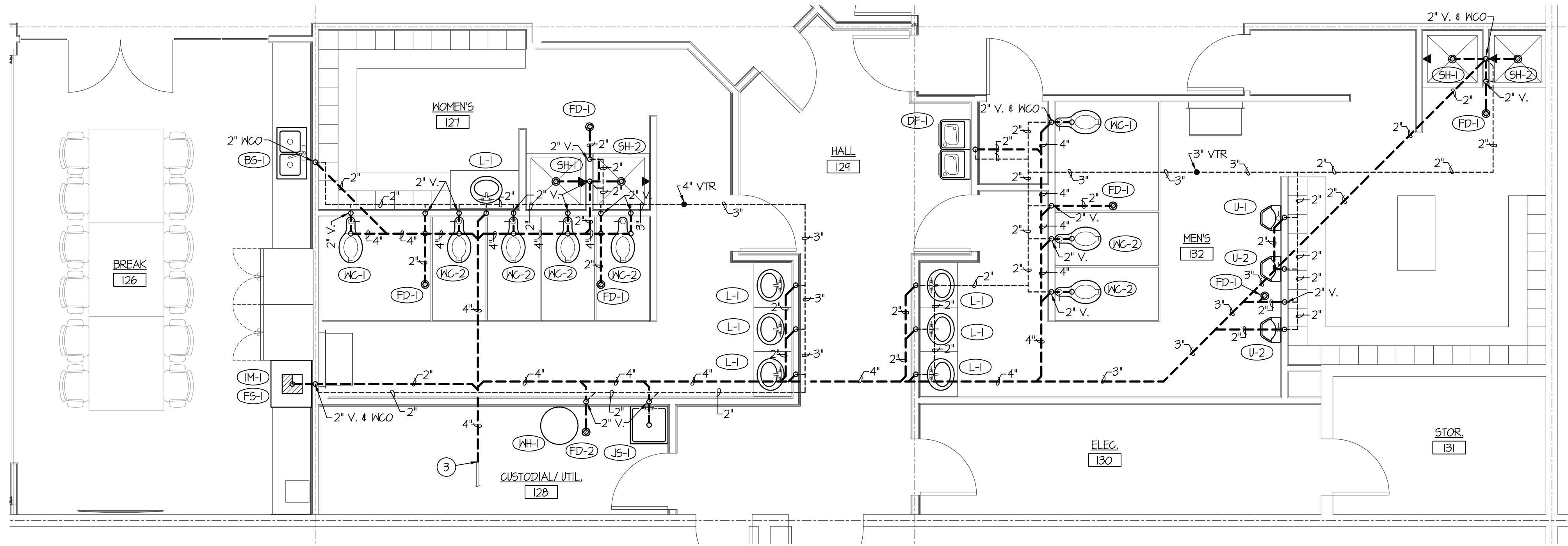
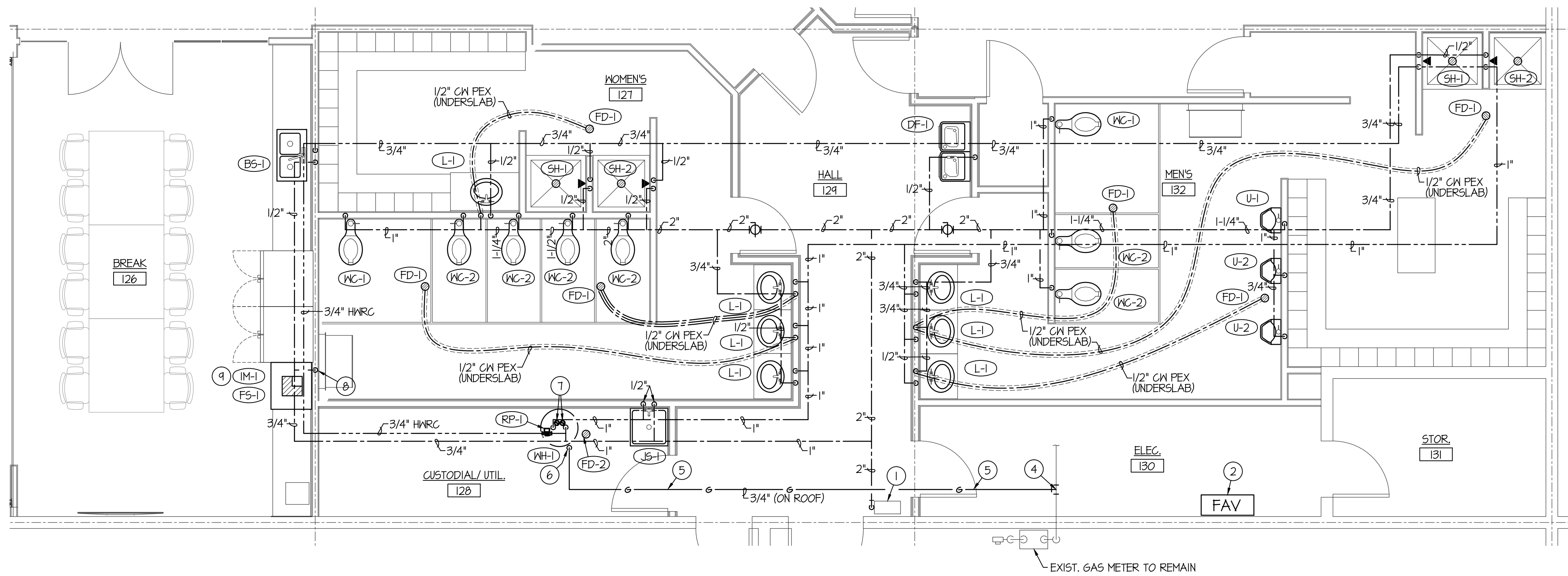


F:\M\1016\BRAD HALL OFFICE\1016 P1.2.dwg Jun 24, 2019 - 3:18pm



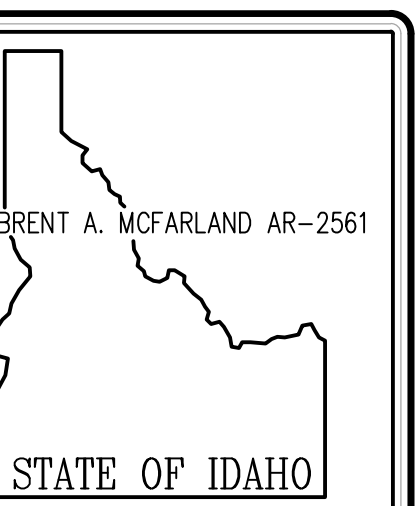
LARGE SCALE WASTE & VENT PIPING FLOOR PLAN
SCALE: 1/4" = 1'-0" 



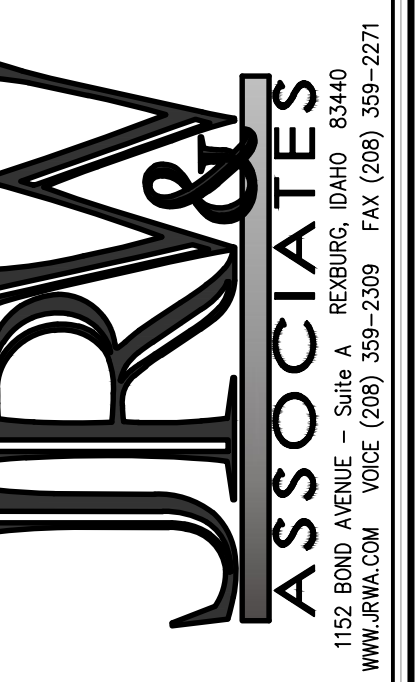
LARGE SCALE WATER PIPING FLOOR PLAN
SCALE: 1/4" = 1'-0" 

PLAN NOTES:

- 1 EXISTING 2" DOMESTIC WATER MAIN, WATER METER AND SHUT-OFF VALVE TO REMAIN. PROTECT DURING CONSTRUCTION.
- 2 EXISTING FIRE RISER TO REMAIN. PROTECT DURING CONSTRUCTION.
- 3 CONNECT NEW 4" WASTE LINE TO EXISTING 4" OR LARGER WASTE LINE LOCATED UNDER SLAB. FIELD VERIFY EXACT LOCATION OF EXISTING PIPING. SANKUT EXISTING CONCRETE SLAB AS REQUIRED TO INSTALL PIPING.
- 4 CONNECT NEW 3/4" (OZ) GAS LINE TO EXISTING GAS MAIN LOCATED ON ROOF. FIELD VERIFY EXACT LOCATION OF EXISTING GAS LINE.
- 5 INSTALL NEW 3/4" (OZ) GAS LINE ON ROOF ON PILLON BLOCKS SIMILAR TO ERICO PIPE PIER SUPPORTS AT 10'-0" ON CENTER.
- 6 DROP 3/4" GAS LINE DOWN THRU ROOF AND CONNECT TO WATER HEATER COMPLETE WITH SHUT-OFF VALVE, DIRT LEG, AND FLEXIBLE CONNECTOR. SEE DETAIL ON SHEET P2.0. SEAL ROOF PENETRATION WEATHERTIGHT.
- 7 RISE (2) 3"Ø WATER HEATER FLUES UP THRU ROOF TO VERTICAL VENT TERMINATION ASSEMBLY. SEAL ROOF PENETRATION WEATHERTIGHT. SEE WATER HEATER DETAIL ON SHEET P2.0.
- 8 INSTALL 1/2" BACK FLOW PREVENTOR ON 1/2" CW LINE SERVING ICE MAKER. PIPE 3/4" DRAIN TO FLOOR SINK LOCATED UNDER ICE MACHINE.
- 9 RUN 3/4" DRAIN FROM ICE MAKER TO FLOOR SINK WITH DOWNTURNED 90° ELBOW AND AIR GAP.



STATE OF IDAHO



JRM & ASSOCIATES
1152 BOND AVENUE - SUITE A REBURG, IDAHO 83440
WWW.JRM.COM VOICE (208) 359-2309 FAX (208) 359-2271

CONSULTANTS:
MECHANICAL ENGINEERING
ENGINEERED SYSTEMS ASSOC.
1355 East Center 83201
Pocatello, Idaho (208) 233-0501
Fax (801) 233-0529
ELECTRICAL ENGINEERING
PAYNE ENGINEERING INC.
1823 E Center St.
Pocatello, Idaho 83201
(208) 232-4439
Fax (208) 232-1435

PROJECT: **Brad Hall and Associates Office** IDAHO FALLS, IDAHO
DRAWING TITLE: **LARGE SCALE PLUMBING PLANS**

| REVISION: | | |
|-----------|------|---------|
| # | DATE | COMMENT |
| | | |
| | | |

ORIGINAL DRAWING SIGNED BY: DWAYNE C. SUDWEERS
DATE ORIGINAL SIGNED: Jun 24, 2019
ORIGINAL ON FILE AT ENGINEERED SYSTEMS ASSOCIATES
1355 EAST CENTER, POCATELLO, IDAHO 83201

PROFESSIONAL ENGINEER
REGISTERED
5762
STATE OF IDAHO
DWAYNE C. SUDWEERS

Engineered Systems Associates
1355 EAST CENTER
POCATELLO, IDAHO 83201
PHONE: (208) 233-0501
FAX: (208) 233-0529
EMAIL: eso@engsystems.com
ESA JOB NUMBER: 19018

PLOT DATE: 5/24/19
DRAWING NO. FILE: **P1.2**
OF -